

Floorplans are not to scale and for guidance only

Mortgage Advice

We recommend Arthur Wheeler Financial Services Ltd for all your mortgage and protection needs. Arthur Wheeler Financial Services Ltd will support you through all of your mortgage and protection needs, giving you honest and high quality advice from start to finish. Arthur Wheeler Financial Services Ltd offer a wide range of mortgage options to meet your financial needs and circumstances.

Contact Emily Davies on 07875 713 816 / emily@arthurwheelerfs.co.uk

Arthur Wheeler Financial Services Ltd is an appointed representative of the On-line Partnership Limited which is authorised and regulated by the Financial Conduct Authority, 46 Regent Street, Shanklin, Isle of Wight, PO37 7AA

Your home maybe repossessed if you do not keep up payments on your mortgage.

These particulars are issued on the strict understanding that all negotiations are conducted via Arthur Wheeler Estate Agents. Although they are believed to be correct, their accuracy is not guaranteed nor do they form any part of a contract. Our description of appliances and/or services including central heating systems should not be taken as any guarantee that they are in working order and should be checked by a prospective purchasers. If there is anything of special importance, please contact the office and we will clarify this information.

LOVE WHERE YOU LIVE

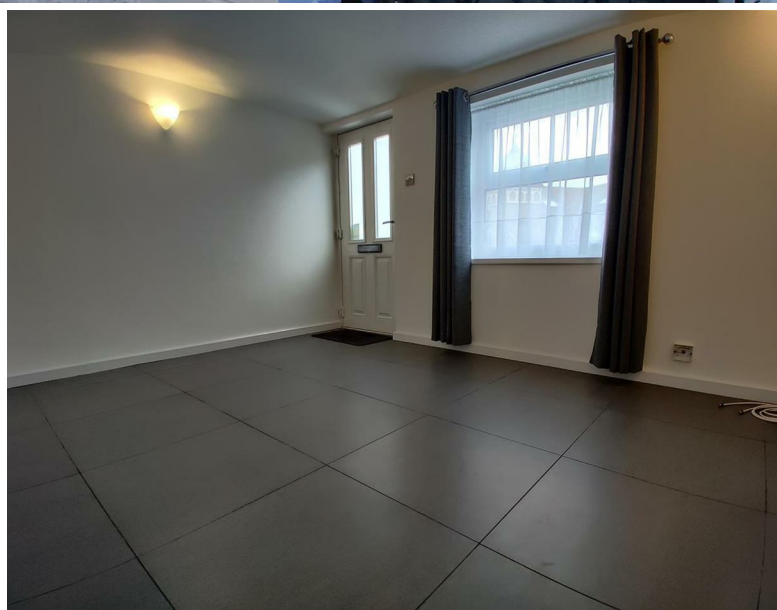
46 REGENT STREET
SHANKLIN
ISLE OF WIGHT
PO37 7AA

01983 868 333
SALES@ARTHUR-WHEELER.CO.UK
WWW.ARTHUR-WHEELER.CO.UK



2
WEST STREET
BRADING
PO36 0DS

£875 PCM



01983 868 333
www.arthur-wheeler.co.uk



- MID TERRACED COTTAGE • 2 BEDROOMS • LOUNGE, KITCHEN, • DOWNSTAIRS SHOWER ROOM • COURT
YARD GARDEN • CLOSE TO TRAIN STATION

MID TERRACED COTTAGE: A lovely 2 bedroom property to include kitchen, downstairs bathroom with shower, Gas CH & uPVC double glazing. Further benefits include Courtyard style garden, charming cottage features low ceilings and lounge with underfloor heating. Council Tax A/EPC D. Not ideal for young children due to the steep stairs.



